

PIMP YOUR GEODATA!

Elise Riedo
Jean-Daniel Michot

Journée ASIT 2016

urbaplan

MANDANT

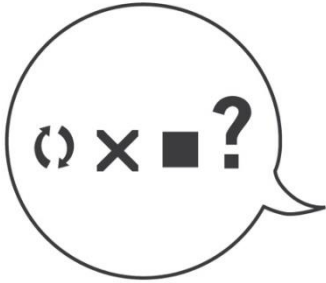
**FOURNISSEUR
DE DONNÉES**

**AMÉNAGISTE
URBANISTE**

CO-AUTEURS

POPULATION

MANDANT

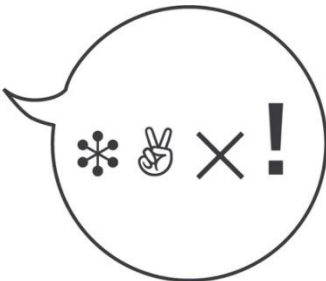


**FOURNISSEUR
DE DONNÉES**

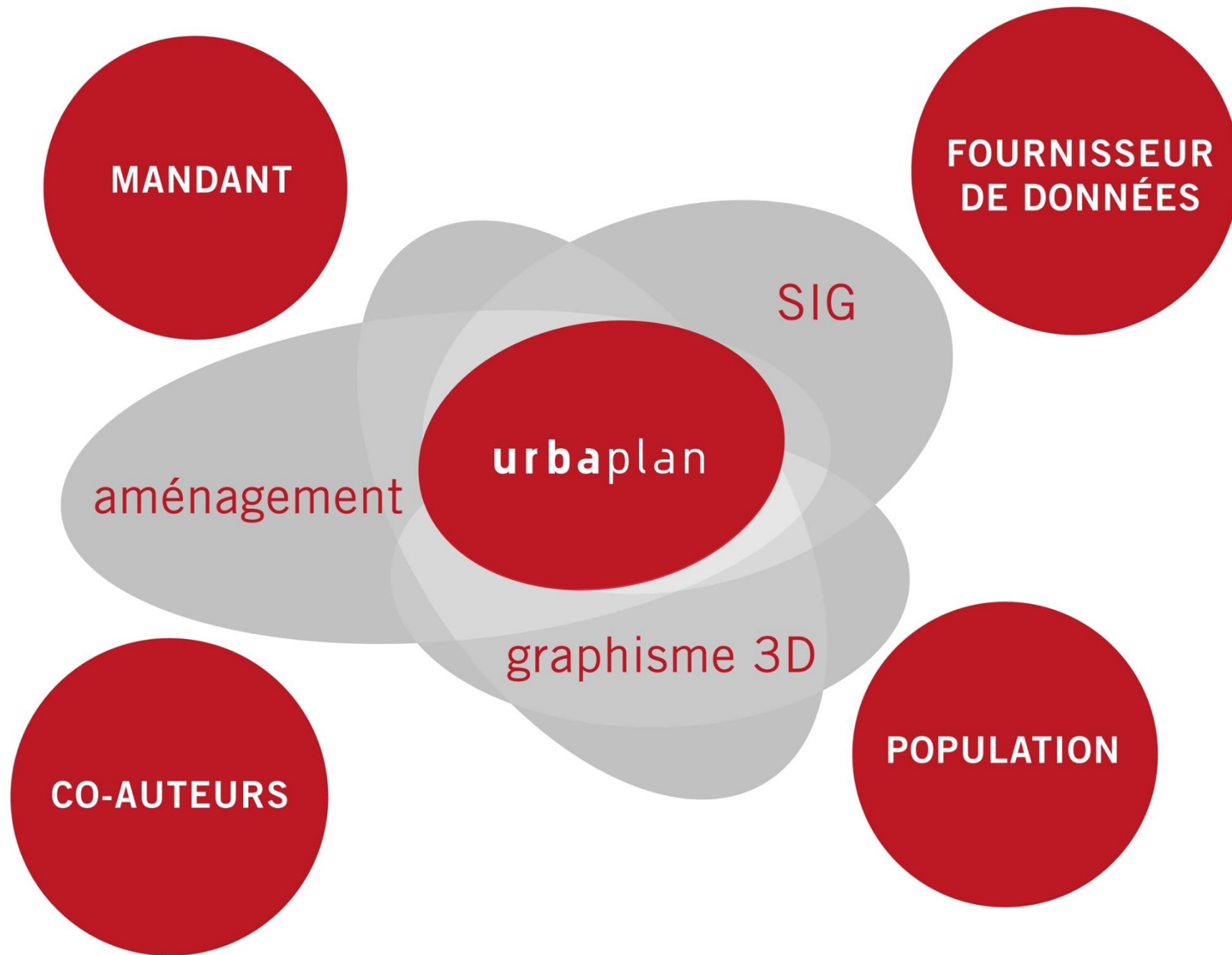
**AMÉNAGISTE
URBANISTE**



CO-AUTEURS



POPULATION



MANDANT

**FOURNISSEUR
DE DONNÉES**

SIG

urbaplan

aménagement

graphisme 3D

CO-AUTEURS

POPULATION

données fournies

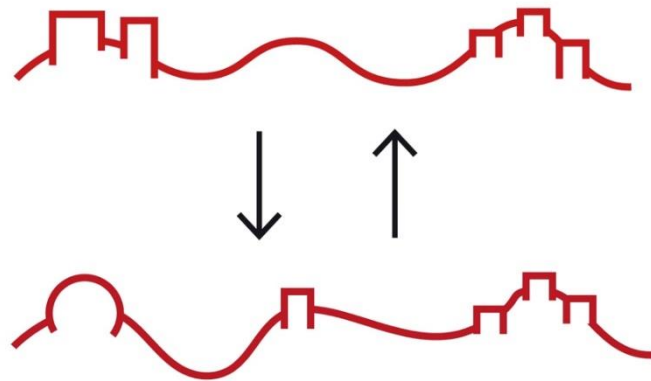


projet



projet 2.0

INTERACTION
GUICHET



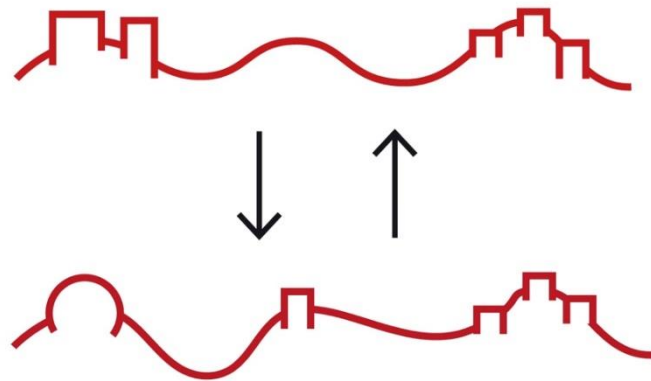
CO-PRODUCTION
PARTICIPATION





projet 2.0

INTERACTION
GUICHET

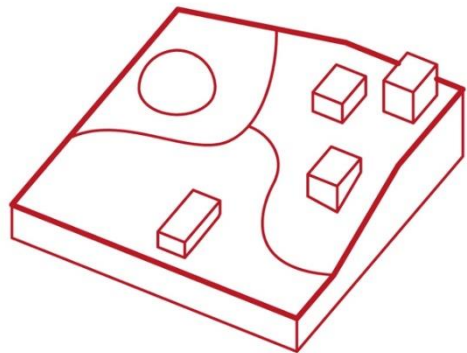
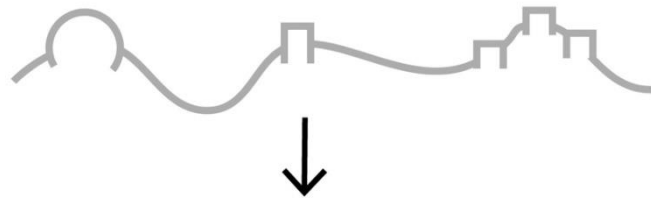


CO-PRODUCTION
PARTICIPATION

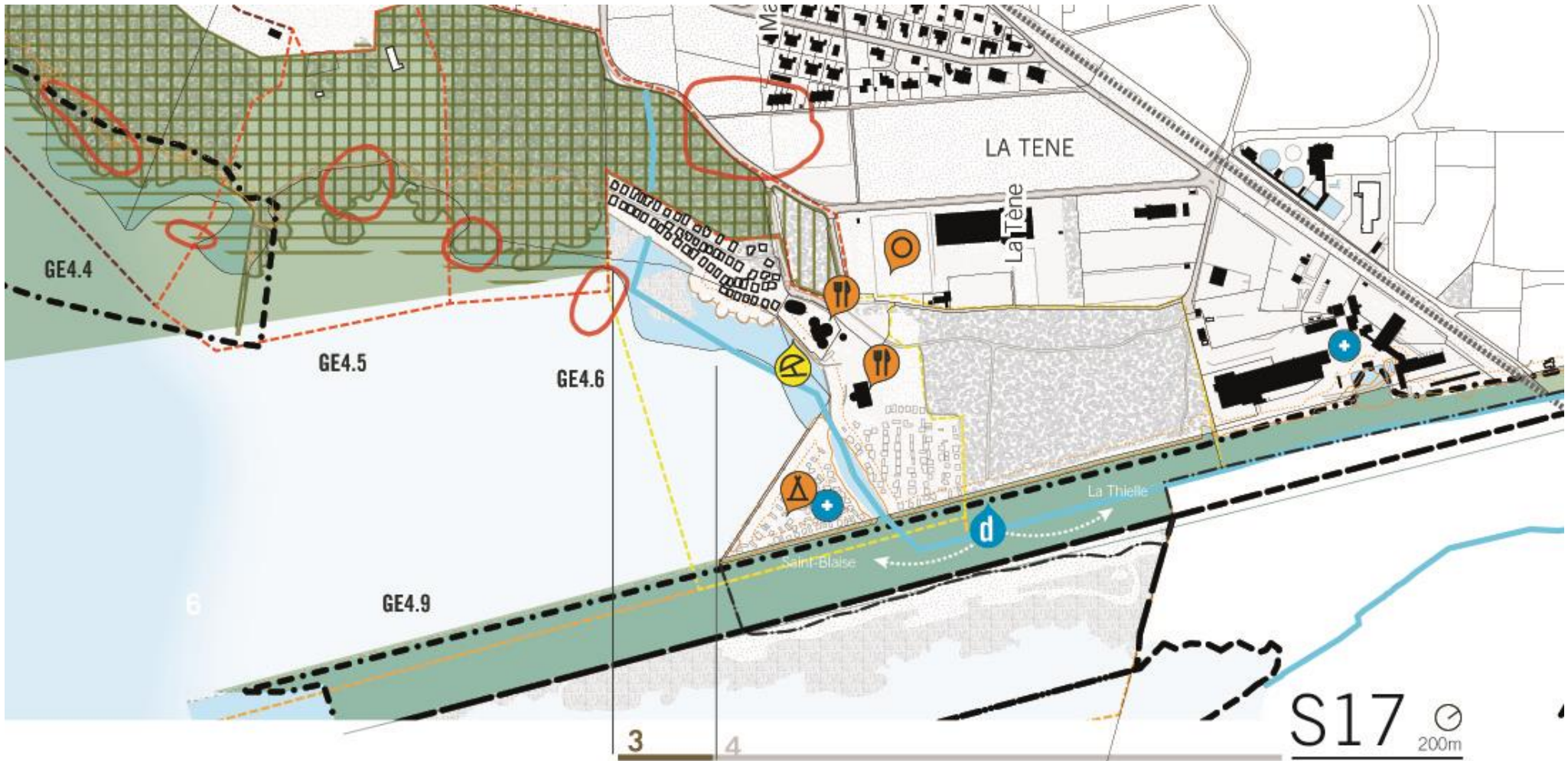


données restituées
(NORMAT)

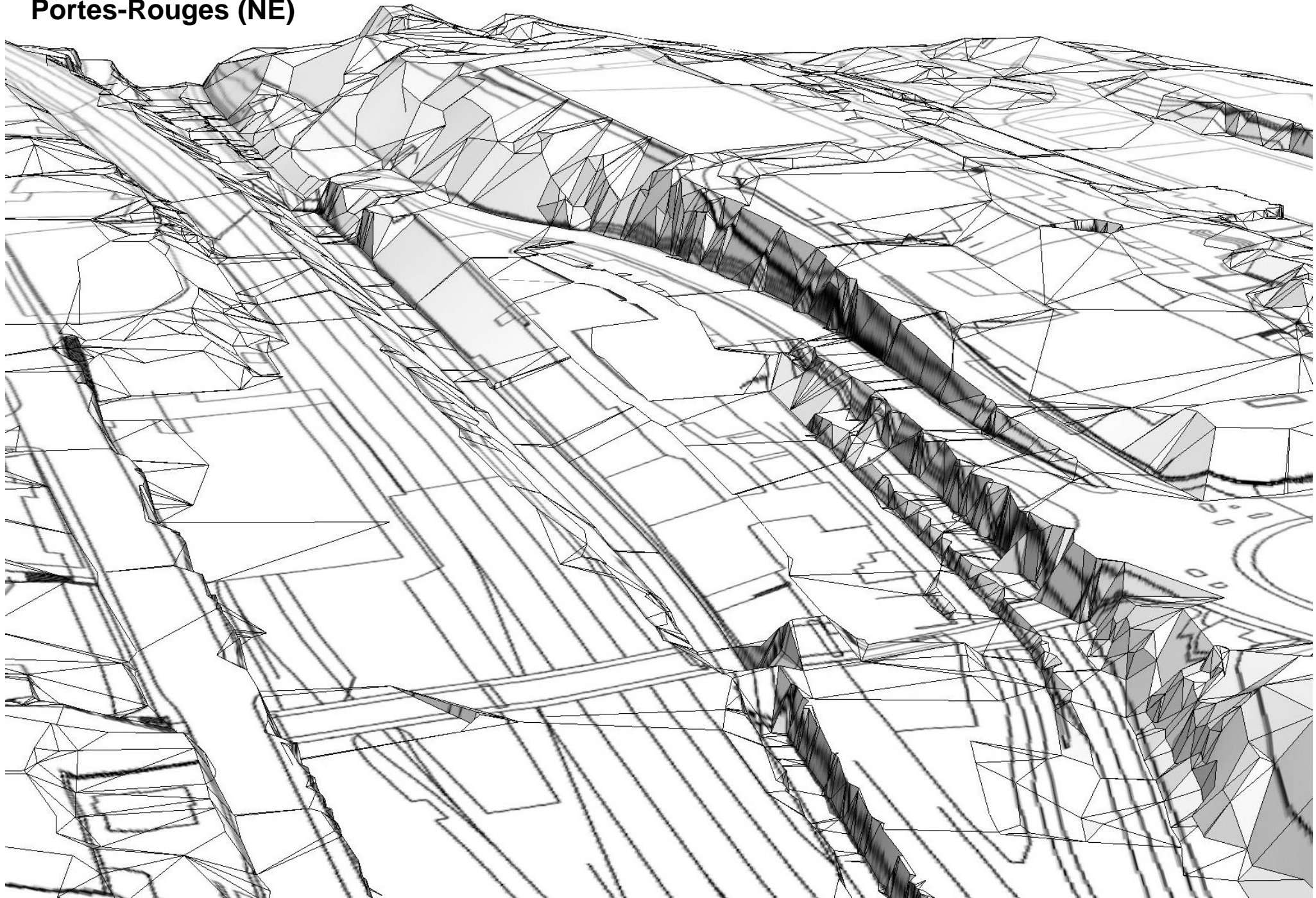


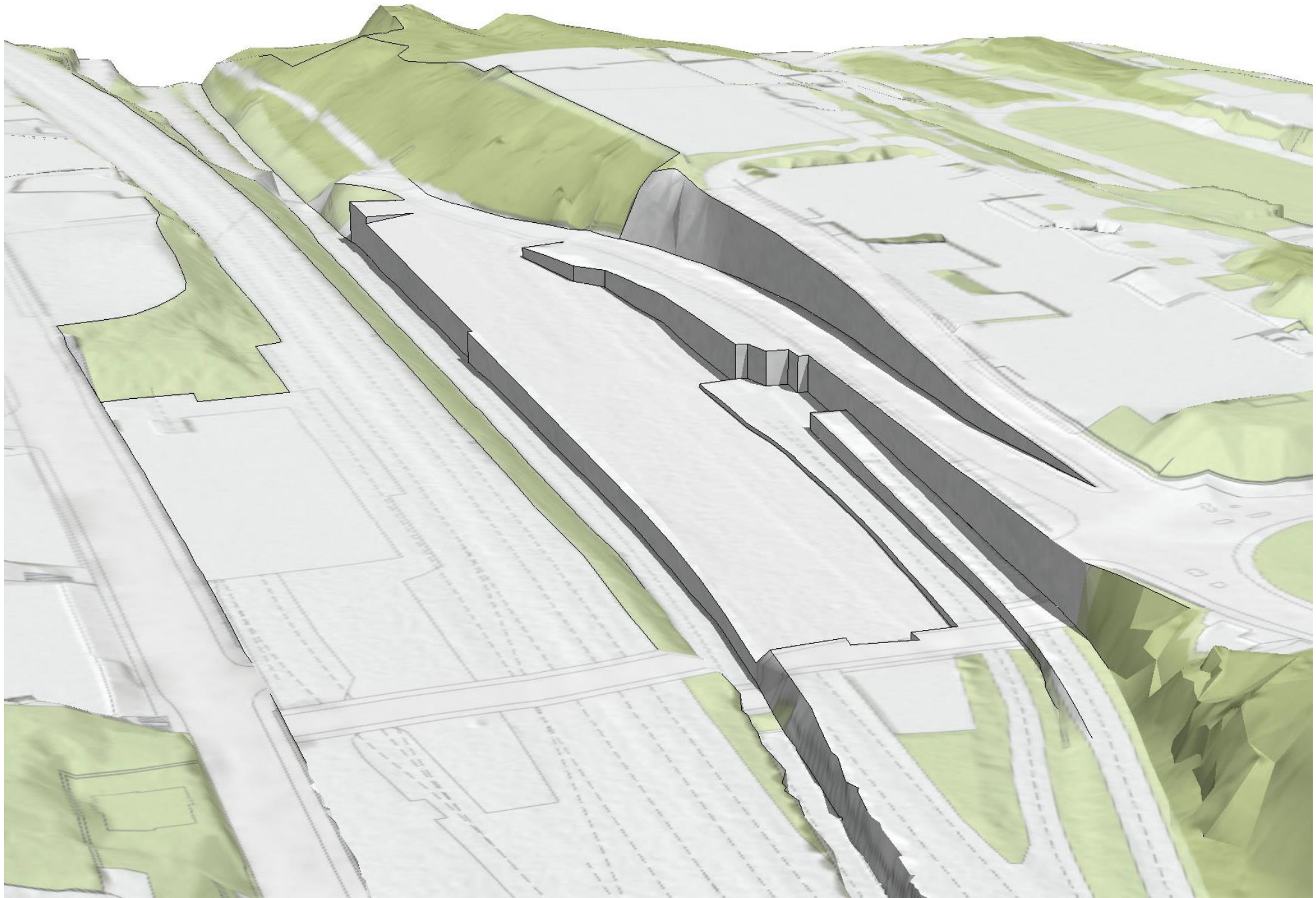


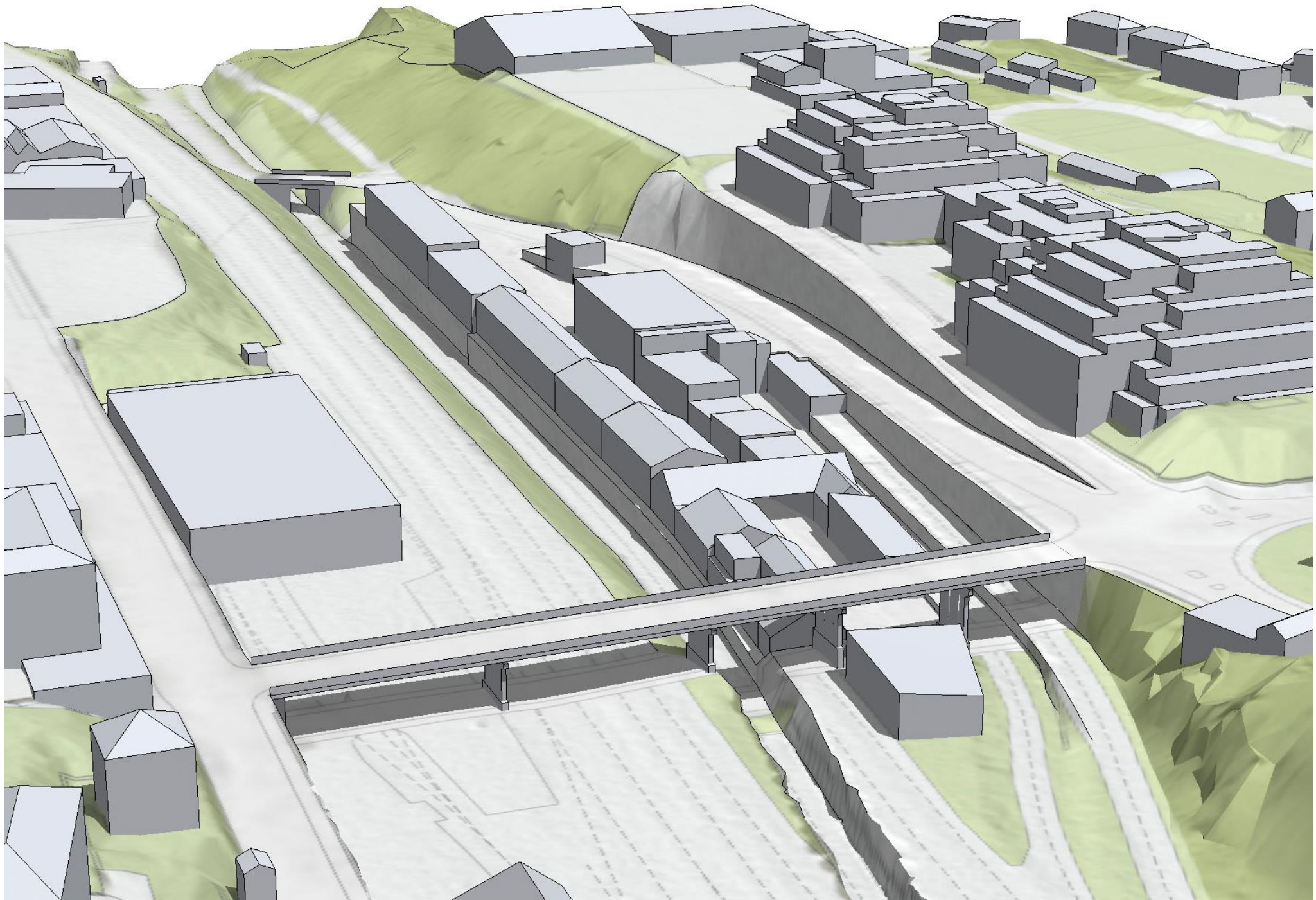
données illustrées

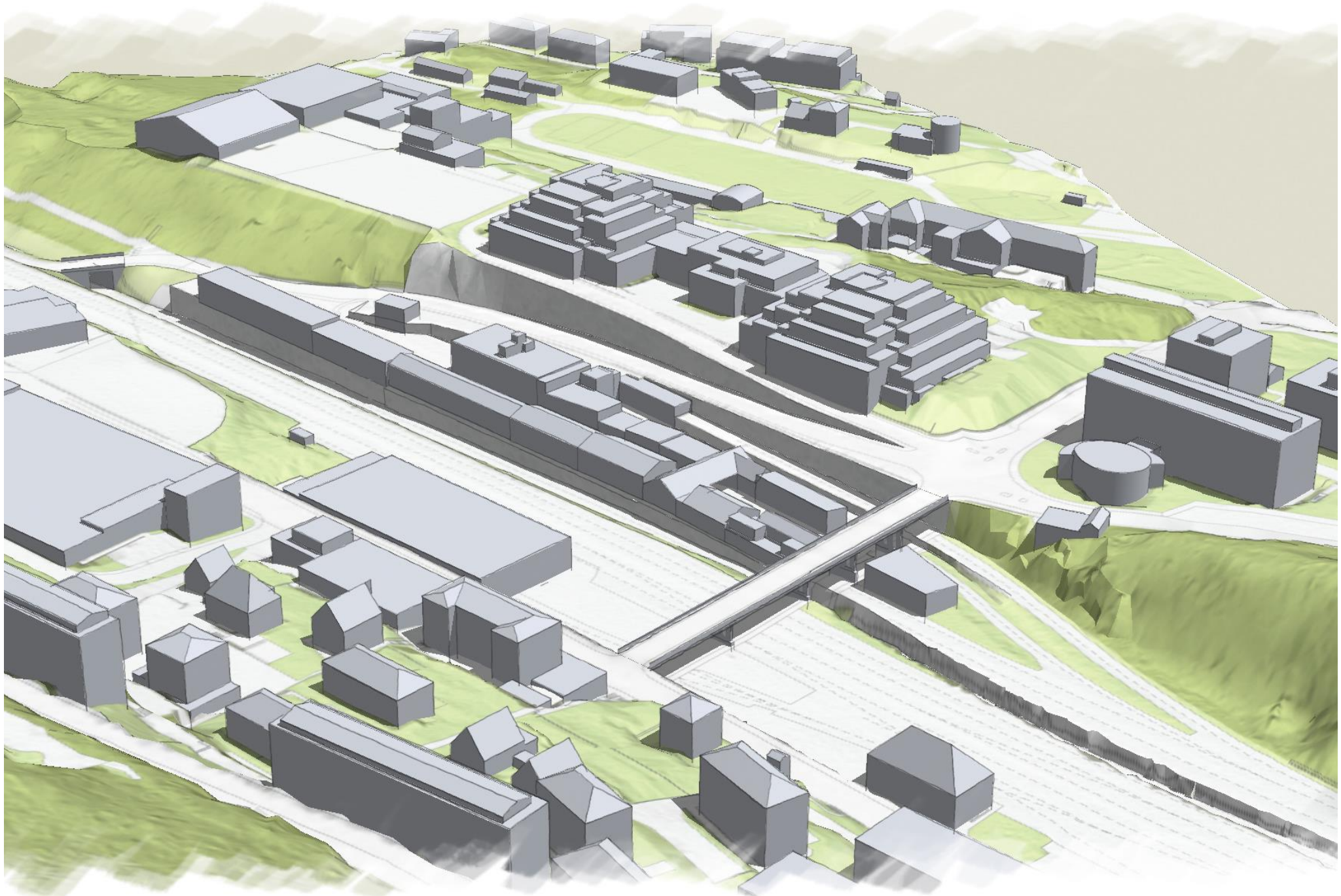


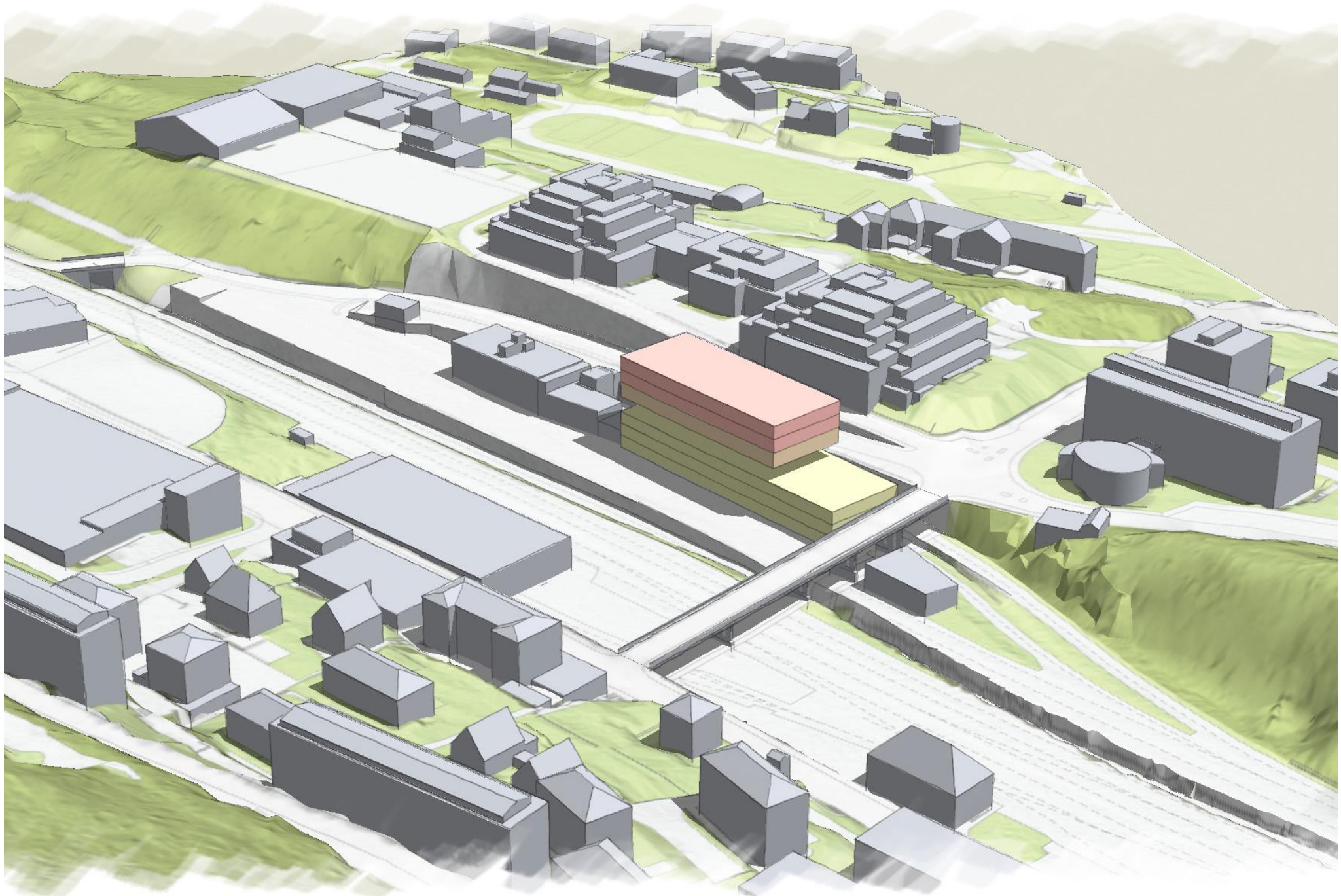
Portes-Rouges (NE)











Saint-Blaise (NE)





Bole les Baillottes (NE)





Meyrin (GE)







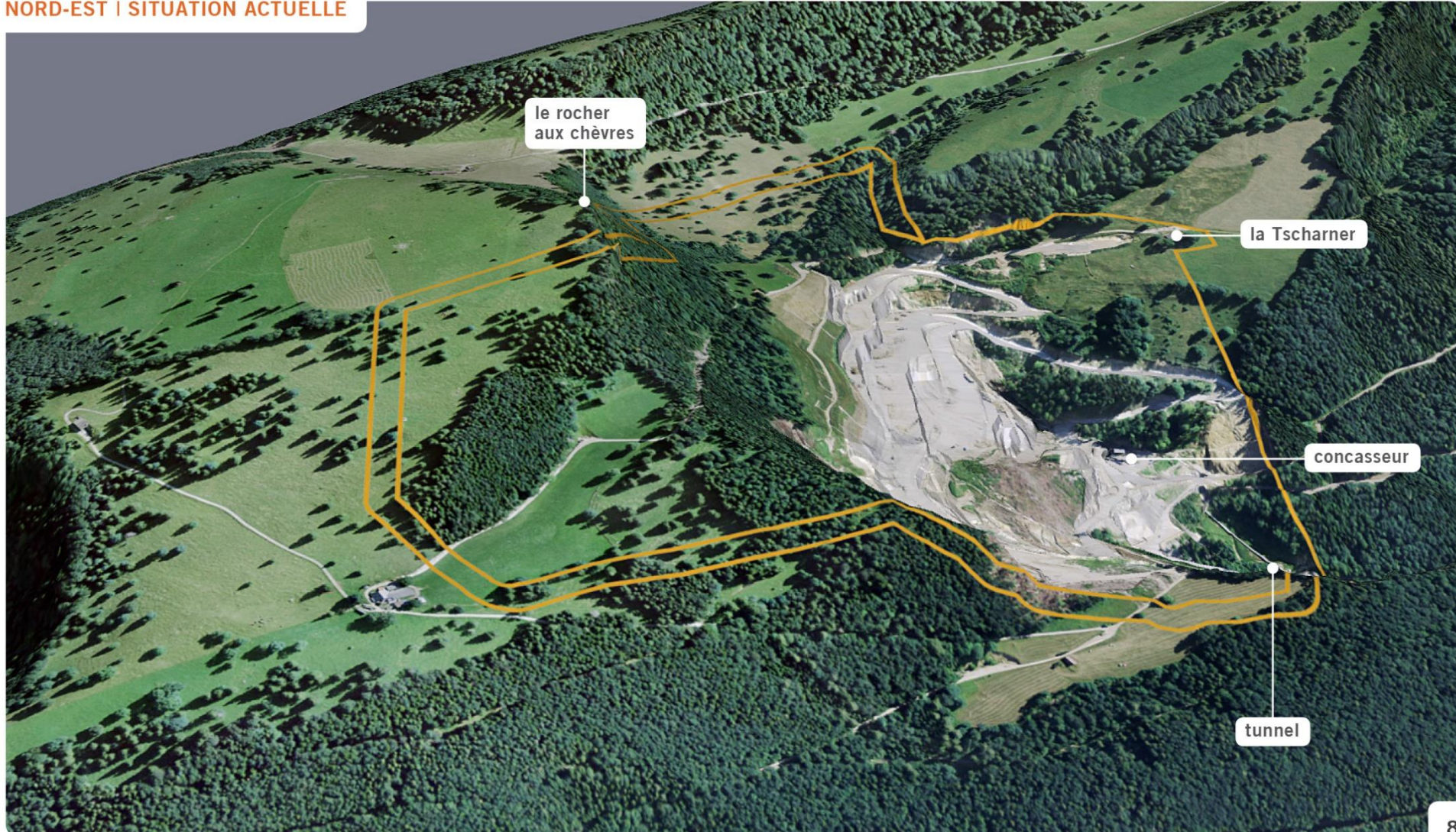


La Heutte (BE)




— Périimètre d'exploitation






NORD-EST | SITUATION ACTUELLE



LEGENDE

-  Périimètre d'exploitation
-  Zone exploitée
-  Zone déjà réaménagée en 2010

AMENAGEMENTS TEMPORAIRES

-  Milieu pionnier / aucune intervention
-  Prairie / reverdissement hydraulique
-  Boisement provisoire

AMENAGEMENTS DEFINITIFS

-  Pâturage boisé
-  Forêt
- 

NORD-EST | 26-50 ANS







Chablais (VD)



Courroux (JU)



Gland (VD)













DES DONNÉES PRÉCIEUSES & COMPLEXES

DES PROJETS CRÉATIFS & RIGoureux

DES VISUELS COMPREHENSIBLES

urbaplan

**PIMP
YOUR
GEODATA!**



**PIMP
YOUR
GEODATA!**